

**MARCH 14-18 / 2023 / LAS VEGAS / NEVADA**

## Registration Open for C&D World 2023

**\*Registration includes a badge to the huge CONEXPO-CON/AGG show at the Las Vegas Convention Center.**

Be sure to register for C&D World 2023, March 14th - 15th at the Paris Resort in Las Vegas, where CDRA will again provide the latest information to help construction material recycling operators grow their businesses. End markets and dealing with regulators will be among the focuses, as well as the best networking opportunities in the C&D industry.

A big plus is that the registration includes a badge to the big **CONEXPO-CON/AGG** trade exhibition, which has become increasingly expensive in recent years. CDRA gets those passes at a reduced rate and is passing on the savings to its attendees.

In addition, attendees can get rooms in the CDRA room block at the Paris Resort at rates cheaper than **CONEXPO-CON/AGG** can offer.

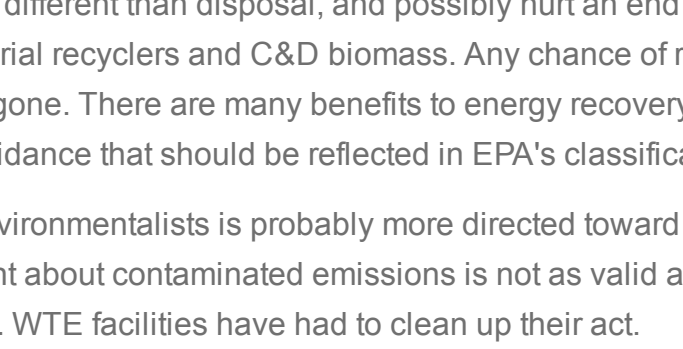
For more information on the show, go to <https://www.conexpoconagg.com/show-experience>

To register for C&D World 2023, go to [www.cdrecycling.org/c-d-world](http://www.cdrecycling.org/c-d-world).

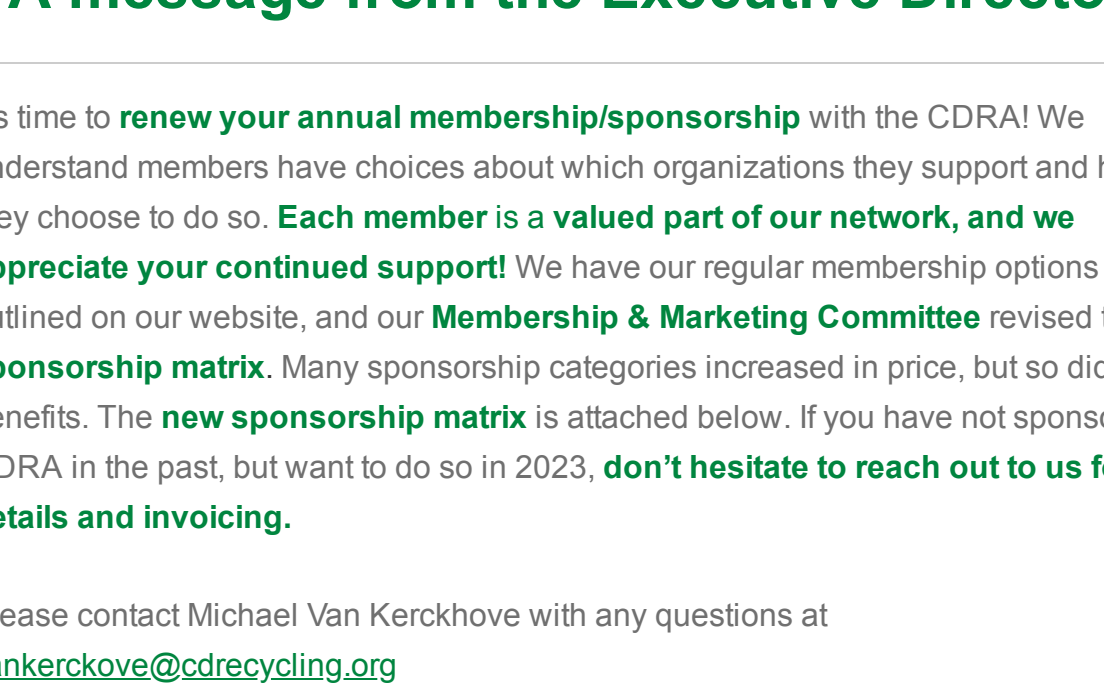
If you have any questions, please contact [info@cdrecycling.org](mailto:info@cdrecycling.org)

[Register Now](#)

## See the Latest Exhibitors and Products



See the Latest Exhibitors and Products  
March 14-18, 2023 | Las Vegas, Nevada



## EPA Re-examining Waste Hierarchy

For many years the U.S. Environmental Protection Agency maintained a hierarchy of preferred waste disposal options that ran from reuse and reduce at the top, recycling in the middle, landfill diversion, and finally landfilling. This was beneficial to C&D recyclers because waste to energy (WTE) was considered a diversion and a step above landfilling. This made common sense, as at least recovering the Btu value of the material was better than just throwing it away.

However, environmental groups have been lobbying top officials at EPA that the emissions from WTE facilities were harmful to the communities near the plants. The Biden Administration has made environmental justice and climate change two of its biggest focuses and picked political appointees accordingly. The environmentalists have received a sympathetic ear at high levels of the EPA, and the agency is considering dropping WTE to the same level as landfilling.

The practical impact of this move would be to allow activists across the country to proclaim WTE no different than disposal, and possibly hurt an end market for construction material recyclers and C&D biomass. Any chance of renewable energy credits would be gone. There are many benefits to energy recovery - chiefly, land use and methane avoidance that should be reflected in EPA's classification of biomass.

The aim of the environmentalists is probably more directed toward MSW facilities, and their argument about contaminated emissions is not as valid as it might have been for 15 years. WTE facilities have had to clean up their act.

The CDRA is working with a few other organizations to respond to this situation, though it will be challenging. Extreme environmentalists have been working for years to turn off WTE facilities, and have hit upon the environmental justice angle as one that might work with the federal government today. We will keep the membership updated, and if you have any further questions, please contact [info@cdrecycling.org](mailto:info@cdrecycling.org).

## A message from the Executive Director

It's time to **renew your annual membership/sponsorship** with the CDRA! We understand members have choices about which organizations they support and how they choose to do so. **Each member is a valued part of our network, and we appreciate your continued support!** We have our regular membership options outlined on our website, and our **Membership & Marketing Committee** revised the **sponsorship matrix**. Many sponsorship categories increased in price, but so did the benefits. The **new sponsorship matrix** is attached below. If you have not sponsored CDRA in the past, but want to do so in 2023, **don't hesitate to reach out to us for details and invoicing.**

Please contact Michael Van Kerckhove with any questions at [vankerkove@cdrecycling.org](mailto:vankerkove@cdrecycling.org)

	Leading \$25,000	Premier \$20,000	Sustaining \$11,000	Supporting \$6,000	Corporate \$3,000
Logo loop on CDRA Website	Yes	Yes	Yes	Yes	Yes
Listing on Find a Recycler Directory	All Locations	10 Locations	5 Locations	3 Locations	One Location
Logo on Sponsor Page	Yes	Yes	Yes	Yes	Yes
Logo on Find a Recycler Profile	Yes	Yes	Yes	Yes	Yes
Logo on (I) Committee Page	Yes	Yes	Yes		
Sponsor & Present at (I) Committee Meeting	Yes	Yes	Yes		
Ads in Printed Newsletter	Full Page	Full Page	Half-Page	Quarter-Page	
Sponsor Logo in Newsletters	Yes	Yes	Yes	Yes	Yes
C&D World Registrations	Five	Four	Two	One	

## California Passes Landmark Aggregate Recycling Bill

### Bill explained at next Legislative Committee call

A bill that requires highway agencies in California to use recycled materials in streets and highways when feasible has been signed into law.

Led by CalCIMA, the California legislature passed AB 2395, which requires "the Department of Transportation and a local agency that has jurisdiction over a street or highway, to the extent feasible and cost-effective, to use advanced technologies and material recycling techniques that reduce the cost of maintaining and rehabilitating streets and highways and that exhibit reduced levels of greenhouse gas emissions through material choice and construction method. The bill would require, beginning January 1, 2024, a local agency that has jurisdiction over a street or highway, to the extent feasible and cost-effective, to apply standard specifications that allow for the use of recycled materials in streets and highways, as specified."

This is the most aggressive push by a state government to use recycled materials on the state's roads, and by driving the demand side, is a better long-term answer to increasing recycling than just passing disposal bans. For some construction materials, such as concrete and asphalt, the biggest end user is the government.

Charley Rea of CalCIMA, who worked the bill to passage, will participate in CDRA's legislative Committee call on Dec. 1 at 2 Eastern, 11 Pacific to explain the practical effects of the bill and how it get passed. The meeting is open to all CDRA members. To get the link, contact the CDRA at [info@cdrecycling.org](mailto:info@cdrecycling.org).

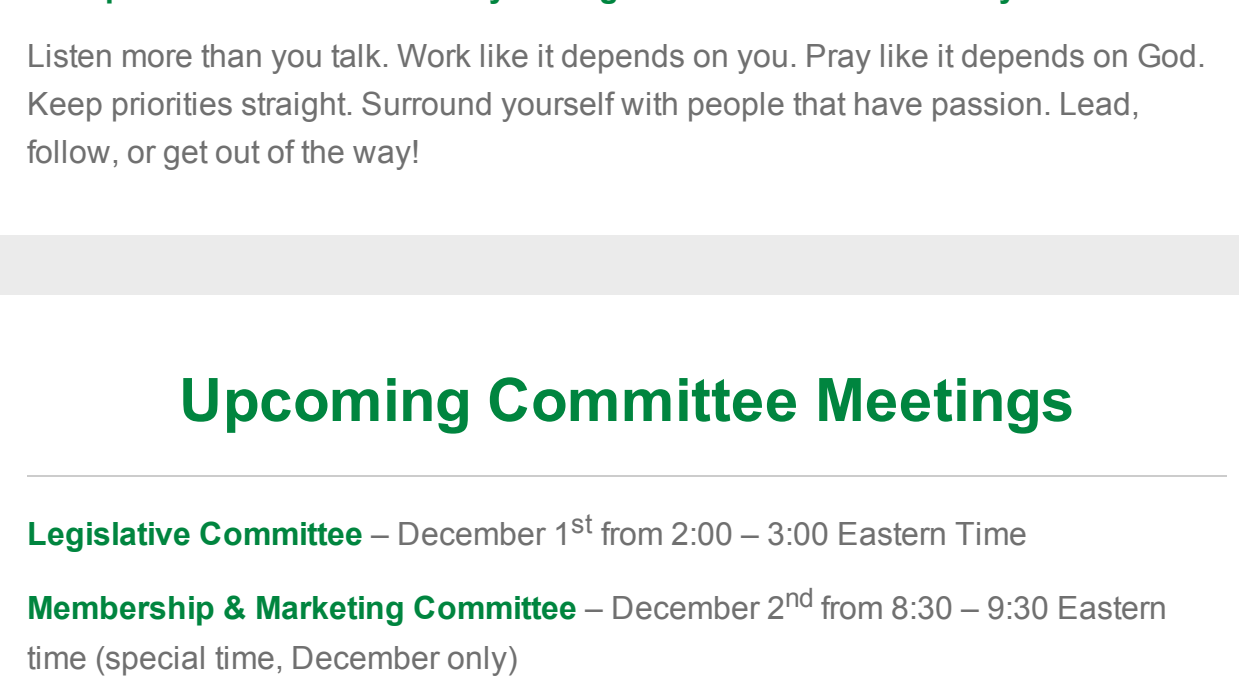
## Gypsum Recycling Committee

The first item on the Gypsum Recycling Committee charter was to produce a white paper on drywall recycling focused on Best Management Practices (BMPs) including assessing demolition waste. The University of Florida was contracted to provide a review of existing literature from around the world and to draft the white paper with input from committee members.

Gypsum is a low-value commodity valued at \$4-\$12 per ton FOB the source. Transportation from the source to the market makes up the net price end users pay. End markets are primarily agriculture, Portland cement, and drywall manufacturing.

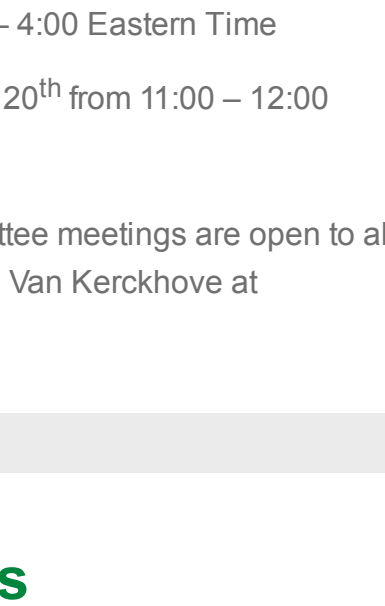
Increasing interest in recycled gypsum as a source of raw material is due to reduced production of synthetic gypsum from coal-fired power plants, mine expansion challenges, and transportation costs for imports which have been offsetting reduced domestic supply. During recent committee meetings, we had experts present on topics relevant to procuring, processing, and end use of recycled gypsum including deconstructing drywall, the science behind agricultural uses, drywall manufacturing, and risk assessments.

Thanks to the engagement of committee members including contractors, recyclers, drywall manufacturers, associations, and staff at the University of Florida "The Best Management Practices for the Recycling of Gypsum Waste from deconstruction to manufacturing" white paper is nearly complete. This will be the most comprehensive document available in North America and a valuable resource to CDRA Members when engaging regulators and industry stakeholders involved in gypsum drywall recycling.



## CDRA Member Spotlight

**Sam Flanery**  
**American Classic - Bailey, MI**



**What materials do you recycle? Can you describe the volume and types of incoming materials you process?**

American Classic's family of companies cast a wide net in the C&D business. The ACC Dumpster Service provides opportunities to recycle a wide range of products from a multitude of customers including wood, concrete, and asphalt shingles that provide the largest volumes. We also see a large amount of cardboard and other standard products.

The dumpster company currently offers over 500 dumpsters up to the 40 yards in size. ACC also owns and operates a sawmill business that has the usual mix of recyclables. The ACC product supply company services over 400 building contractors with anything to do with the exterior of a home or small commercial business. There is a large opportunity for additional C&D materials as our customers engage the recycling market.

**How did ACC get started in the business?**

Leon Thompson and his wife Terri, his two sons, Nate and his wife Shannon, Jake and his wife Katelyn, daughter Raeanne and her husband Greg, all have major roles in American Classic Family of business. ACC started 21 years ago by simply roofing houses. Leon saw an opportunity to gain a business share in the roofing business by having larger quantities of roofing material on hand in stock. That led to a roofing supply business that now supplies all materials for the exterior of homes. They also provide turnkey solutions with product and installation. They have both in-house crews and subcontractors. ACC has 40 roofing crews and 35 siding crews. They then acquired a dumpster company and a sawmill and the waste and recycling business was born.

**What are the biggest challenges in your market and C&D recycling?**

One of the largest challenges is getting the contracting companies to change the way they do business and to focus more on recycling. Old habits die hard, but we are seeing a big increase in the willingness to recycle versus just sending it to the landfill. The biggest challenge for us now is managing the growth of our recycling division.

**Where are the biggest opportunities?**

American Classic's owners made the decision to go all out in the waste and recycling business three years ago, and the first big initiative they gave us was to find a way to recycle asphalt shingles. Getting a Beneficial Reuse petition approved by the state environmental office was the first order of business. We received that in May 2021 and off to the races we went. Our main focus was finding and developing new markets for recycled shingles. Michigan has a recycling initiative called Nextcycle that is administered by RRS, a recycling consulting firm. They sent out RFPs for recycling projects and one track was the roads track. The goal was to find recycling products to be used in the roads. Forty-eight companies submitted ideas and plans. Only a handful were chosen, and American Classic's asphalt shingle recycling use was one of them. We have many markets for the recycled shingles now. That spurred enthusiasm in the company to go after more products that can be recycled. Profitability is top of mind and long-term investment is the key. We are now over 500 dumpsters for the hauling side. We purchased a building to develop a full-blown C&D MRF to handle our growth. Busy time at the American Classic Family of Businesses.

**How long have you been a member of the CDRA?**

Three Years

**What inspired you to join the CDRA?**

I was searching the internet about recycling shingles and found the CDRA's shingle recycling website. I read every page and every document on the site and decided we needed to get to know all these people and that has proven to be the best decision I have made in finding a C&D recycling business for American Classic.

**What do you find most rewarding about working in this industry?**

Every industry has more challenges than solutions. However, I have always loved a challenge, and the most rewarding part has been realizing how many others there are in this industry taking on the same challenges. When I found CDRA and got to know other members and see how willing they are to work together to solve the challenges, it has been the most rewarding thing I have found in my career.

**What challenges have you faced over the years and how have you overcome them?**

Getting people to change and become open to new ways of doing business is a common denominator in all industries. Finding and becoming involved in organizations like CDRA that are embracing others is the best way to overcome challenges. I guess you could say misery loves company.

**What's something about you (a fun fact) that not many people know?**

I'm 68 years old and feel like I am 40. I tried retirement and quickly missed having a challenge. I love working with people to create something new and believe there are no problems only opportunities. Family is everything to me and we must set an example by doing something great. Our kids, grandkids, and great-grandkids need good examples. My wife and I have been married 50 years next year and many more to come, God willing. Oh, and I love cutting down trees.

**How do you think the industry is changing and what trends do you see coming up on the horizon?**

People are a lot more conscious of where things come from and where they go when they have served their usefulness. Recycling is becoming the normal, not the exception. More opportunities on the horizon but you must think outside the box.

**What advice would you give to someone interested in this industry?**

First, join CDRA and get involved, share what you know, and learn from others. You are never too old to learn something new.

**Best piece of business advice you've gotten or learned over the years?**

Listen more than you talk. Work like it depends on you. Pray like it depends on God. Keep priorities straight. Surround yourself with people that have passion. Lead, follow, or get out of the way!

## Upcoming Committee Meetings

**Legislative Committee** – December 1<sup>st</sup> from 2:00 – 3:00 Eastern Time

**Membership & Marketing Committee** – December 2<sup>nd</sup> from 8:30 – 9:30 Eastern time (special time, December only)

**Shingle Recycling Committee** – December 13<sup>th</sup> from 11:00 – 12:00 Eastern Time

**C&D World Convention Committee** – December 13<sup>th</sup> from 4:00 – 5:00 Eastern Time

**Gypsum Recycling Committee** – December 14<sup>th</sup> from 11:00 – 12:00 Eastern Time

**End Markets Committee** – December 12<sup>th</sup> from 3:00 – 4:00 Eastern Time

**Safety & Risk Management Committee** – December 20<sup>th</sup> from 11:00 – 12:00 Eastern Time

\*These dates and times are subject to change. Committee meetings are open to all members. To attend a meeting, please contact Michael Van Kerckhove at [vankerkove@cdrecycling.org](mailto:vankerkove@cdrecycling.org).

## Industry News

<https://www.visualcapitalist.com/sp/the-construction-industrys-growing-waste-problem/>

Fleet focus:

<https://www.conexpoconagg.com/news/top-tips-for-heavy-equipment-financing-with-rising>

<https://www.conexpoconagg.com/news/how-to-manage-your-fleet-more-efficiently>

<https://www.conexpoconagg.com/news/understanding-government-incentives-and-tax-benefit>

<https://www.ny1.com/nyc/all-boroughs/news/2022/11/16/city-sanitation-fleet-electrify-2040-deadline>

The Mount Group has a new addition – Pocono Sand & Stone.

[https://www.linkedin.com/posts/mount-construction-inc\\_it-is-with-great-pride-the-mount-group-is-actively-6997987364631437312-r2aT?utm\\_source=share&utm\\_medium=member\\_desktop](https://www.linkedin.com/posts/mount-construction-inc_it-is-with-great-pride-the-mount-group-is-actively-6997987364631437312-r2aT?utm_source=share&utm_medium=member_desktop)

**Special Thanks to the CDRA's Sponsor Members**



**Follow Us on Social Media!**



**Quick Links**  
Membership Application  
Sponsorship Opportunities  
Download the PDF version of the Member Newsletter  
Recycling Certification Institute (RCI)



35 E. Wacker Dr. Suite 850  
Chicago, IL 60601  
Phone: 866.758.4721

Share this email:



Manage your preferences | [Sign out](#) using TrueRemove®  
Got this as a forward? [Sign up](#) to receive our future emails.  
View this email [online](#).

35 E. Wacker Drive Suite 850  
Chicago, IL 60601-2106 United States

This email was sent to .  
To continue receiving our emails, add us to your address book.



[Subscribe](#) to our email list.