

Get Your CONEXPO-CON/AGG Ticket Through C&D World 2023 Registration

Registration will open soon for ConExpo-Con/Agg, the huge equipment exhibition being held March 14-18 in Las Vegas, where the CDRA will be co-locating next year's C&D World Annual Meeting. As in past ConExpo-Con/Agg years, registrants to C&D World 2023 will automatically receive a badge to enter the big exhibition as well. This badge will be at a reduced price than buying directly from the show.

The CDRA has co-located its meeting with ConExpo-Con/Agg since 2002 because so many of its attendees want to preview all the equipment at the exhibition, and member vendors invest a lot into their booths at the event.

As you make your plans to attend ConExpo-Con/Agg, remember that your C&D World registration not only gets you into the CDRA meeting, but also gets you entry into the big show, and the opportunity to reserve a room in the CDRA's sleeping room block at the Paris Resort at a rate less than available through ConExpo-Con/Agg.

Watch www.cdrecycling.org soon for more information or contact info@cdrecycling.org if you have questions. We will send you a notification when registration has opened.

New Sponsor and More Presenters Confirmed for 9th Shingle Recycling Forum

The National Asphalt Pavement Association is the latest organization to sign on as a sponsor to the 9th Shingle Recycling Forum, being held Oct. 5-6 at the Loews Chicago O'Hare. NAPA has sponsored several of the events in the past. And it makes sense for them to be involved, NAPA represents as hot mix asphalt is the largest end market for recycled asphalt shingles (RAS). Other sponsors include the Asphalt Roofing Manufacturers Association and Paragon Resources.

The Forum not only features top-notch sessions that will provide information for all stakeholders in shingle recycling but also tours of a shingle recycling facility and a hot mix plant that uses RAS in its mixes, making this a must-see event. A copy of the full program and registration instructions are available here:

www.cdrecycling.org/events/shingle-recycling-forum/

CDRA Midyear Meeting In Nashville

There is still time to sign up for the CDRA's Midyear Board Meeting, Sept. 12-13 in Nashville. CDRA committees and our Board will be meeting as part of the event. It is a great time to network with recycling peers from across the country and learn from the committee discussions about new ways to help your business. The meeting is open to all CDRA members. To learn more, including how to get into the CDRA room block at the 21c Hotel (the block closes soon), contact info@cdrecycling.org.

CDRA Member Spotlight

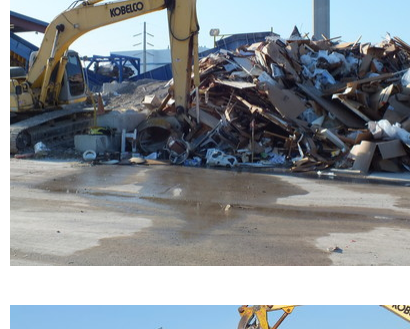
Tim Lamontagne

**Lee County Solid Waste Department
Fort Myers, FL**



What materials do you recycle? Can you describe the volume and types of incoming materials you process?

Lee County's Construction and Demolition Debris Recovery Facility accepts mixed construction demolition debris waste from businesses and residents within Lee County, Florida. The recovery facility receives an average of 60,000 to 70,000 tons per year with a monthly diversion rate which varies from 50% to 80%. Through both manual and mechanical separation, Lee County recovers and recycles cardboard, concrete, rip rap, steel, rigid plastics, and fines (RSM). Recovered materials are self-hauled to local recyclers within the county. RSM and rip rap material has beneficial reuse value and is utilized at our landfill for road base, cover and berm construction.



How did you get started in the business?

Lee County implemented a mandatory business recycling ordinance in 2007. LC Ord. 07-25 includes construction and demolition debris waste. The goal of the program was to enhance Lee County's recycling efforts, meet the state of Florida's goal of 75% recycling rate, and reduce the amount of material landfilled saving both air-space and acreage. The county began a C&D recovery pilot program, initially housed at the county's transfer station, to accept mixed construction debris waste. Recovered material such as concrete, metal, cardboard and rigid plastic buckets was hand-picked or separated utilizing a skid steer and hauled to local private-sector recyclers within the county. In 2010, Lee County constructed a C&D Recovery Facility designed to process 62 tons per hour that began full operation in 2011.

What are the biggest challenges in your market and C&D recycling?

The biggest challenge is finding feasible end markets for recovered materials. Specifically, items such as carpet and asphalt roof shingles.

Where are the biggest opportunities?

The biggest opportunity would be asphalt roof shingle recycling. Lee County receives approximately 30,000 tons of asphalt roof tear-offs annually.

How long have you been a member of the CDRA?

Lee County has been a member of the CDRA since 2012.

What inspired you to join the CDRA?

Membership in CDRA provides the opportunity to learn and network with other C&D recycling professionals throughout the country. Specifically, connections with processing equipment vendors, maintenance methods, recovery methods and sharing end market prospects.

What do you find most rewarding about working in this industry?

The recycling industry provides a range of opportunities, including the ability to reduce the amount of debris that is traditionally landfilled, the preservation of natural resources by creating new viable products from recycled materials and the creation of new job opportunities.

What challenges have you faced over the years and how have you overcome them?

One of the biggest challenges in operating the C&D facility was to find a good balance between production and maintenance of the processing-separation equipment. In the past, we focused on running the plant for 10 hours straight with little time for inspection of the major equipment components. However, we have found that taking time between breaks or shift changes to clean and remove debris from around pulleys and rollers has significantly reduced our maintenance cost.

What's something about you (a fun fact) that not many people know?

I am one with the force and the force is with me. I am a Star Wars fan!

How do you think the industry is changing and what trends do you see coming up on the horizon?

I think consumers will continue to demand the companies they buy from be more socially responsible and environmentally conscious. As more people learn about the benefits of construction and demolition debris recycling, they will look for recovered products when they shop.

What advice would you give to someone interested in this industry?

Be patient. You do not nor will you ever have all the answers. Reach out to as many people in the industry as you can and learn their perspective. Do not be afraid to try new methods and be open to change.

Best piece of business advice you've gotten or learned over the years?

Business is about people. Building strong, lasting relationships during your career matters.

Industry News

Environmental Justice

Environmental Justice (EJ) continues to be a topic all industry affiliates should become familiar with as legislation moves across the country. Our own Chris Whitehead hosted a webinar on *Best Practices for Developing a Corporate Environmental Justice Program*, which is a good place to start.

Here's the link to the recorded presentation: https://www.youtube.com/watch?v=GldTtu_jYvw

Additionally, Mr. Whitehead provided us with a compendium of environmental justice legislation from each of the 50 states. THANK YOU to Chris Whitehead.

[\(pdf compendium document attached\)](#)

Transportation

Scrap News published a series focused on how transportation industries are building a workforce for the future:

[What the Maritime Industry Is Doing to Build the Workforce of the Future](#)

[What the Trucking Industry Is Doing to Build the Workforce of the Future](#)

[What the Railroad Industry Is Doing to Build the Workforce of the Future](#)

C&D Recycling News

A variety of options exist for recycling C&D materials. The potential to reach higher than 90% recycling rate is realistic with some collaborative efforts.

[Ditching downcycling for C&D waste](#)

Peter Ward, managing director of New Zealand-based contractor Ward Demolition strives for 100% recycled C&D materials, and he describes five (5) factors that support their recycling goal.

[C&D waste recycling – 5 key factors in chasing the 100% dream](#)

Special Thanks to the CDRA's Sponsor Members

DIAMOND



PLATINUM



RUBY



EMERALD



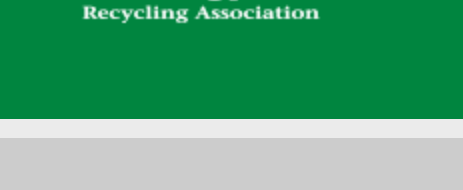
CORPORATE



Follow Us on Social Media!



Quick Links
[Membership Application](#)
[Sponsorship Opportunities](#)
[Download the PDF version of the Member Newsletter](#)
[Recycling Certification Institute \(RCI\)](#)



35 E. Wacker Dr. Suite 850
 Chicago, IL 60601
 Phone: 866.758.4721

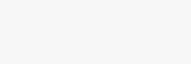
Share this email:



Manage your preferences | Opt out using TrueRemove®
 Got this as a forward? Sign up to receive our future emails.
 View this email online.

35 E. Wacker Drive Suite 850
 Chicago, IL | 60601-2106 United States

This email was sent to:
 To continue receiving our emails, add us to your address book.



[Subscribe](#) to our email list.